



# TECHNICAL PRODUCT DOCUMENTATION

## Product Overview and Options

	TYPE	HEIGHT MAX	WIDTH MAX	THICKNESS	CORE			LEAF FINISH					FRAME FINISH		GASKET		LEVER		LOCK	
					Honeycomb	Tubular	Solid	Primed	Matt	Gloss	Oak	Laminate	Matt	Textured	White	Black	Insensation	Others	Magnetic	Mechanical
FS2 FRAMELESS SWING	Frameless	120"	42"	2"	•	•	•	•	•	•	•		•	•	•	•	•	•	•	
FD2 FRAMELESS DUO	Frameless	120"	36"	2"	•	•	•	•	•	•	•		•	•	•	•	•	•	•	
FP2 FRAMELESS POCKET	Frameless	120"	42"	2"	•	•	•	•	•	•	•		•	•	•		•	•		•
FB2 FRAMELESS BYPASS	Frameless	120"	36"	2"	•	•	•	•	•	•	•						•	•		
FL2 FRAMELESS SLIDE	Frameless	96"	47"	2"	•			•	•	•	•						•	•		
FV2 FRAMELESS PIVOT	Frameless	120"	47"	2"	•	•	•	•	•	•	•						•	•	•	

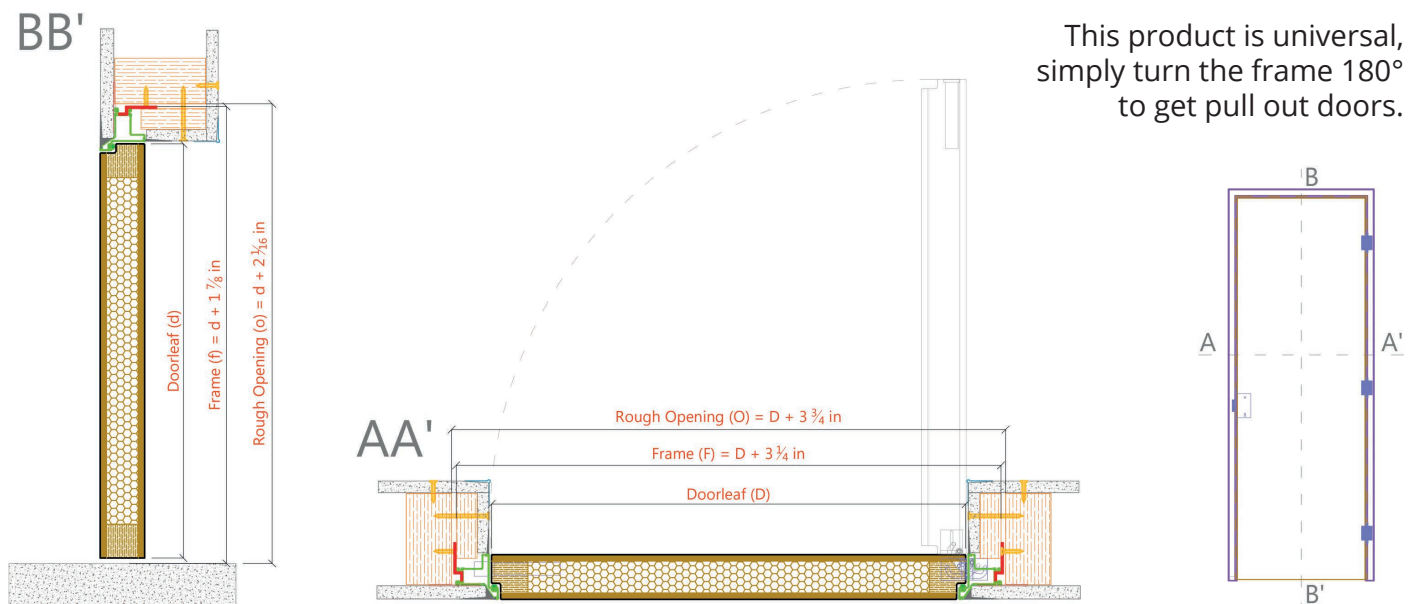
## INDEX

FS2 Frameless Swing	2
FD2 Frameless Duo	3
FP2 Frameless Pocket	4
FB2 Frameless Bypass	5
FL2 Frameless Slide	6
FV2 Frameless Pivot	7
Leaf Cores	8
Locking	9
Hinges	10
Finishes	11
Door Levers and Pulls	12
Pantographic Design and Glass Inserts	13
Special Configurations	14

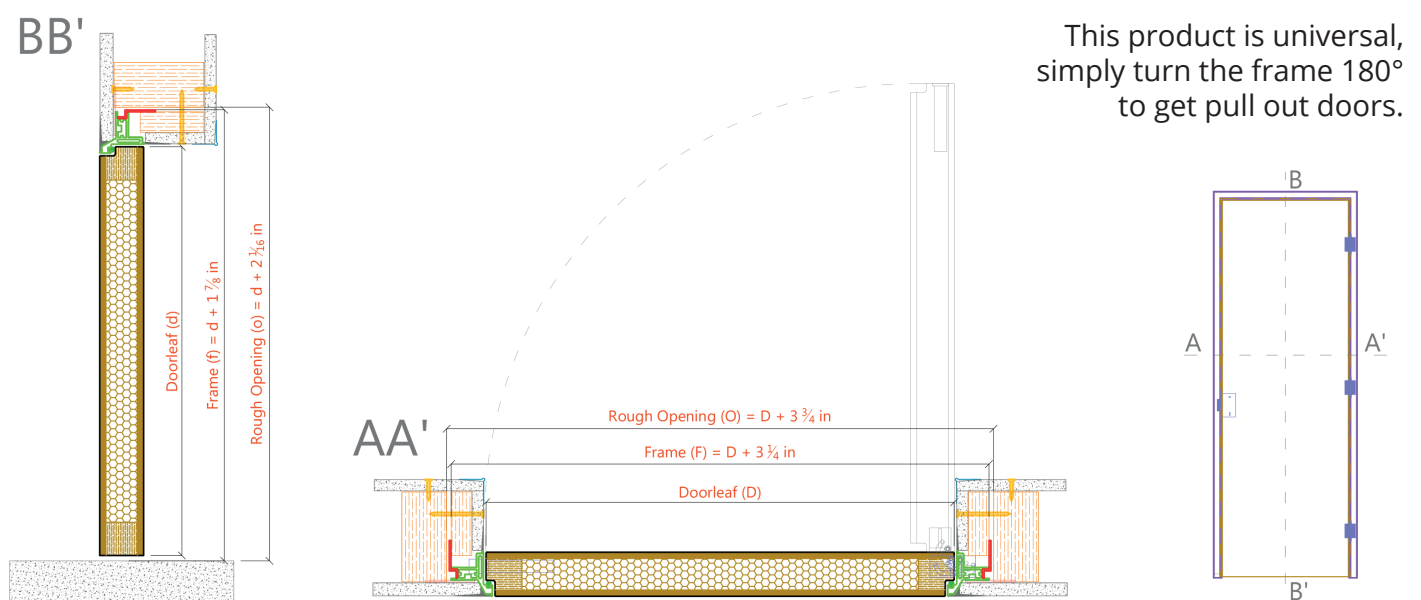


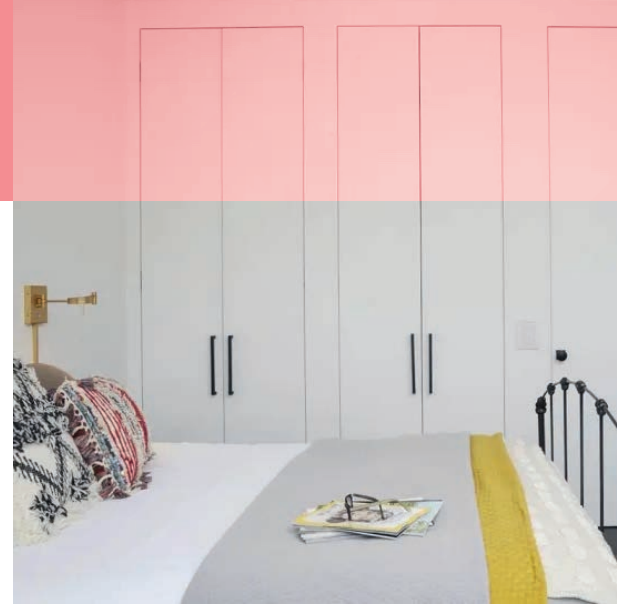
## FS2 FRAMELESS SWING

### 1/2" Dry Wall Plan Dimensions



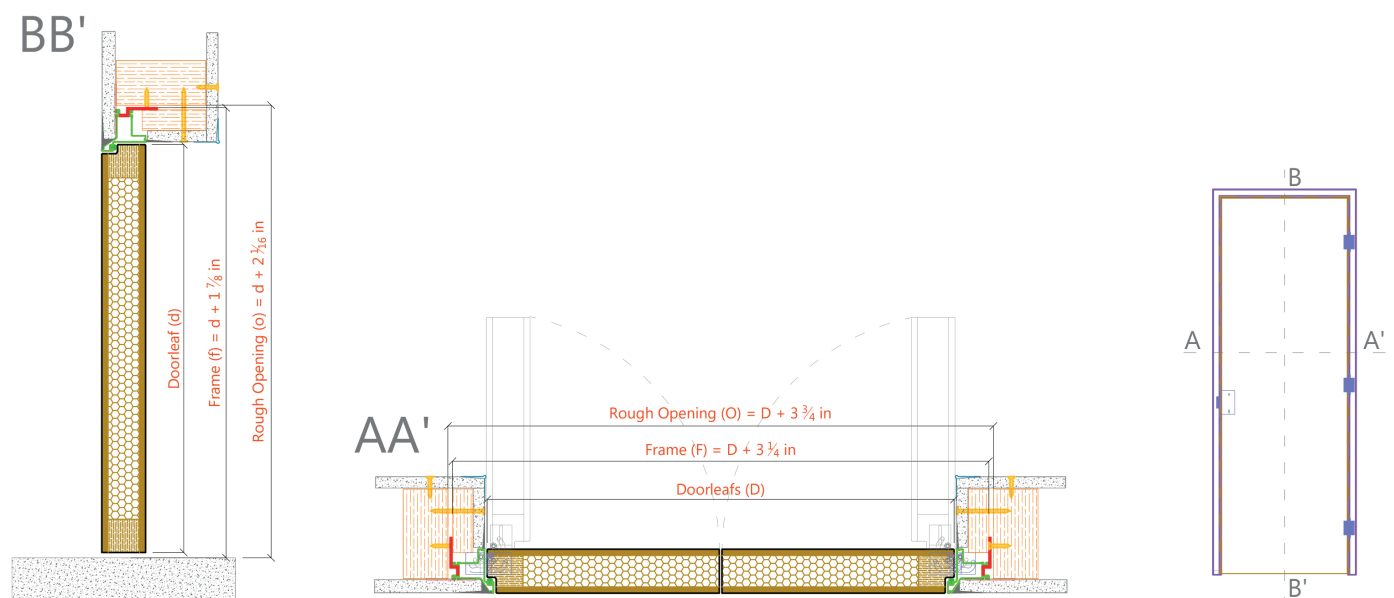
### 5/8" Dry Wall Plan Dimensions



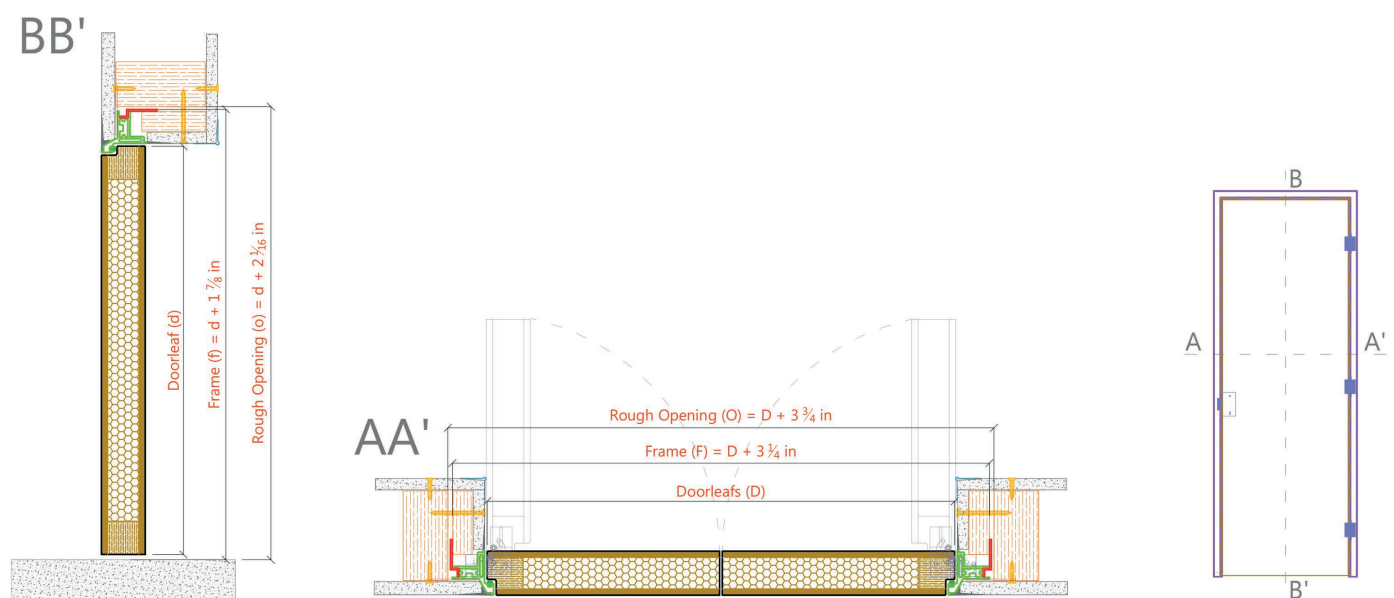


## FD2 FRAMELESS DUO

### 1/2" Dry Wall Plan Dimensions



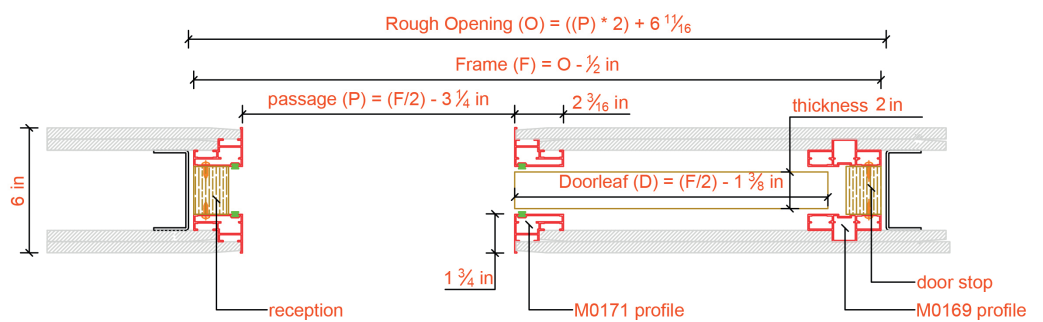
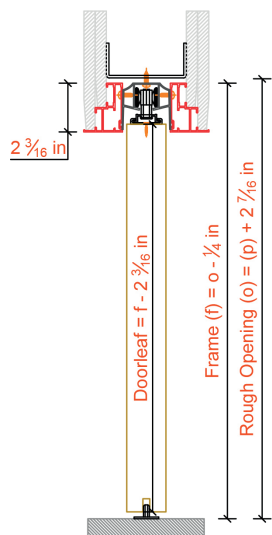
### 5/8" Dry Wall Plan Dimensions





## FP2 FRAMELESS POCKET

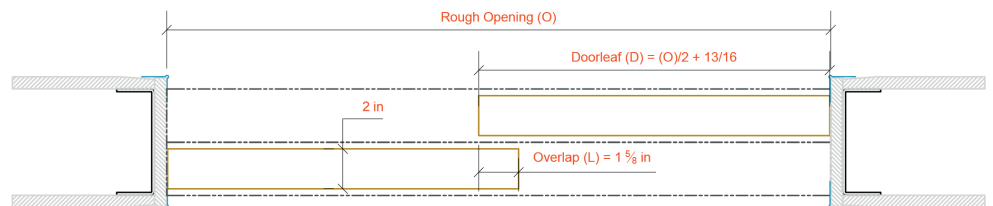
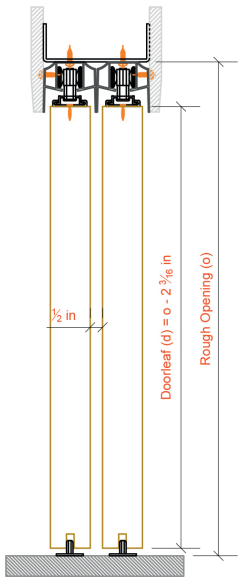
### Plan Dimensions





## FB2 FRAMELESS BYPASS

### Plan Dimensions

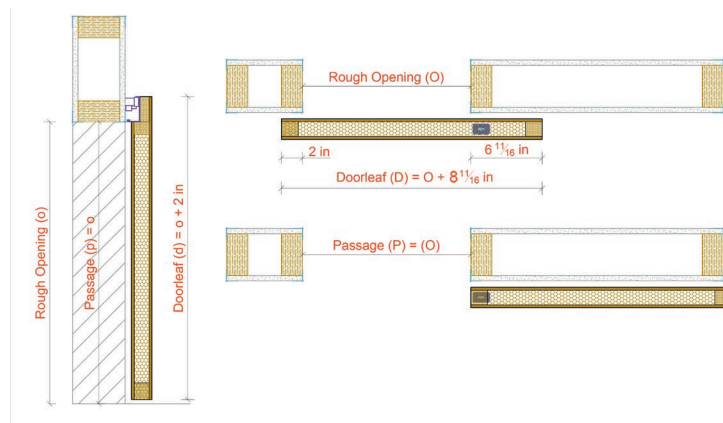




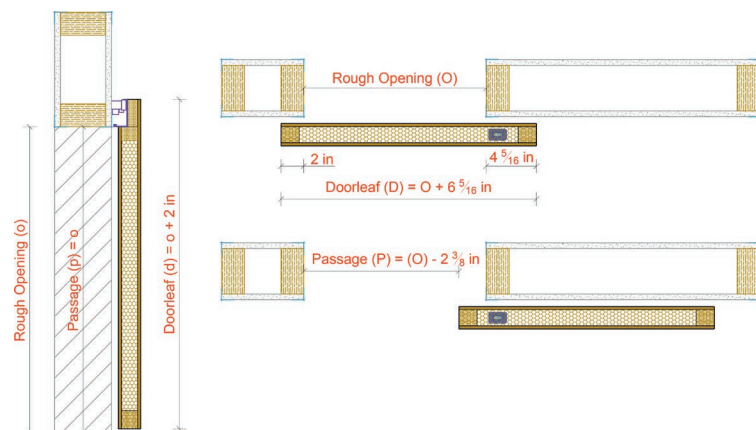
## FL2 FRAMELESS SLIDE

### Plan Dimensions

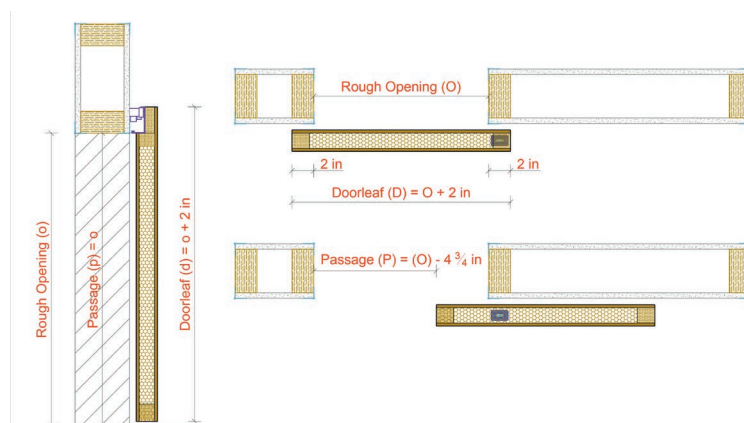
#### Version 0



#### Version 60



#### Version 120



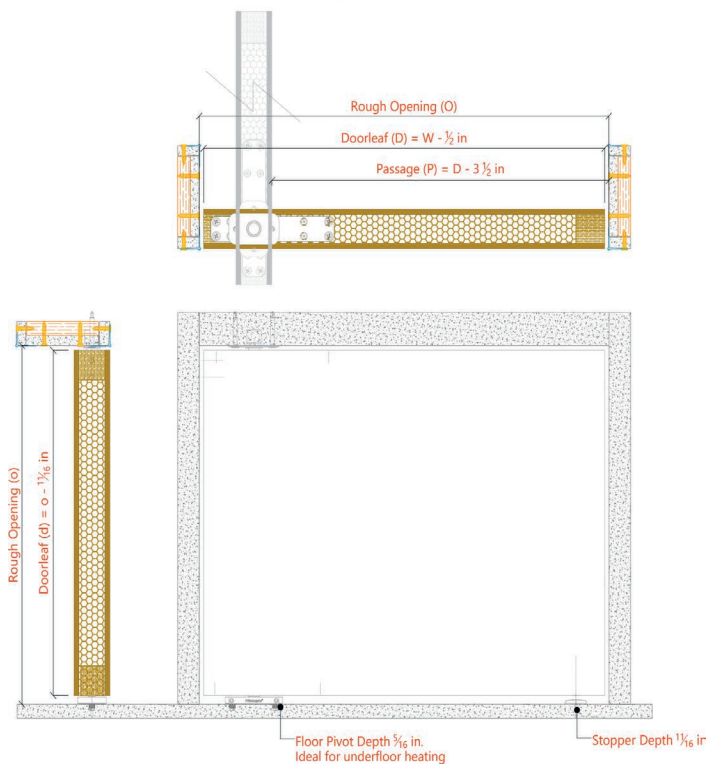




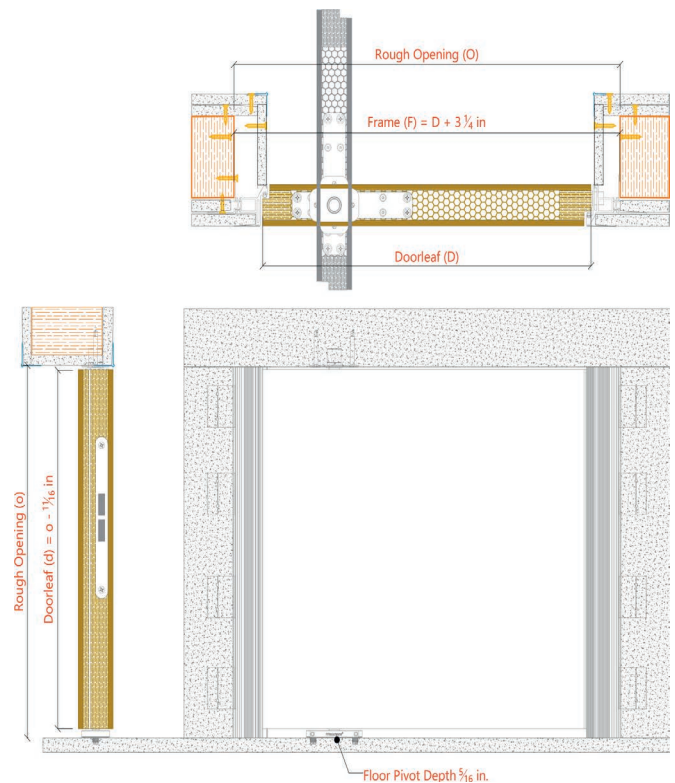
## FV2 FRAMELESS PIVOT

### Plan Dimensions

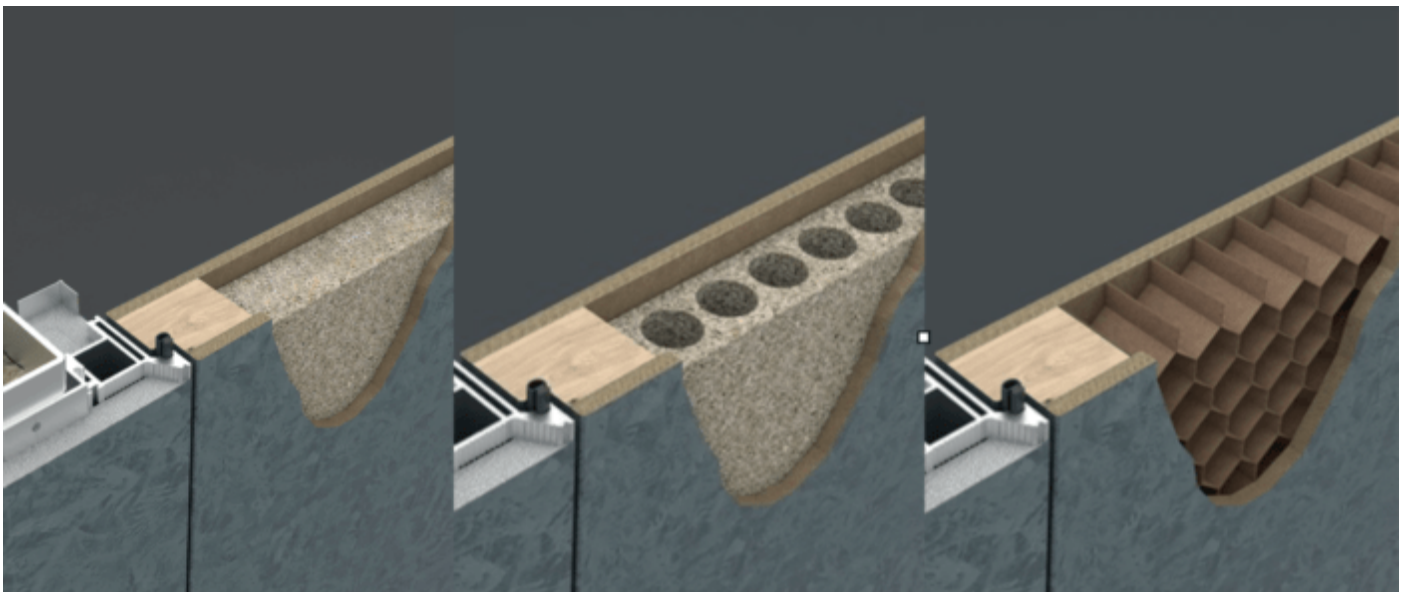
#### No Frame



#### Frameless



## LEAF CORES



### Solid

- extreme weight for banks, fire-rated or ultra quiet rooms
- also used when slots for HVAC are milled in leaf

### Tubular

- standard used in luxury homes

### Honeycomb

- lighter weight for closets or ancillary rooms

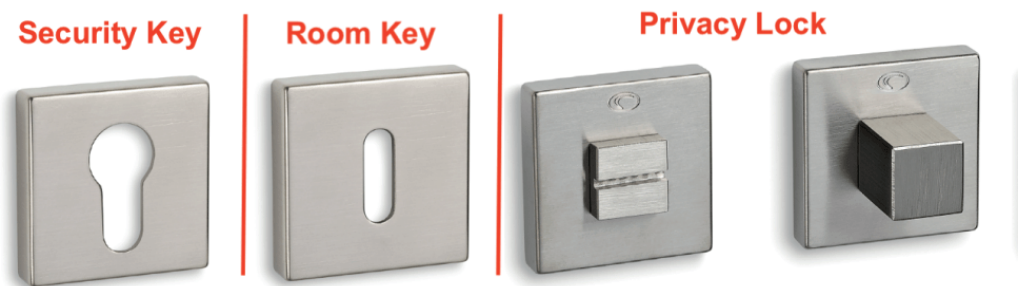
## Comparisons

- |   |   |  |
|---|---|--|
| <ul style="list-style-type: none"> <li>• 32 dB</li> <li>• 36 x 96" door weighs approx. 187 lbs</li> </ul> | <ul style="list-style-type: none"> <li>• 30 dB</li> <li>• 36 x 96" door weighs approx. 136 lbs</li> </ul> | <ul style="list-style-type: none"> <li>• 26 dB</li> <li>• 36 x 96" door weighs approx. 80 lbs</li> </ul> |
|---|---|--|



## LOCKING

### Lockcase options



#### Passage

- no lock, only levers

#### Security key

- normal coded key
- with or without our cylinder

#### Room key

- skeleton key

#### Privacy

- turnknob and emergency release
- available in all formats to match levers

### Lock options



#### Pocket

- lock with edge pull



#### Touch

- no handle needed, but pull needed on pull side of door
- also known as NOHA lockcase (**NO HANDLE**)



#### Touch & Close

- no handle needed, but pull needed on pull side of door
- integrated privacy function on both sides of the door



#### Easy

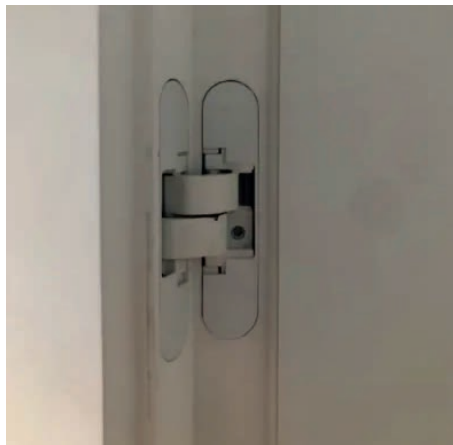
- magnets used for double closets to keep closed without a lockcase

## HINGES

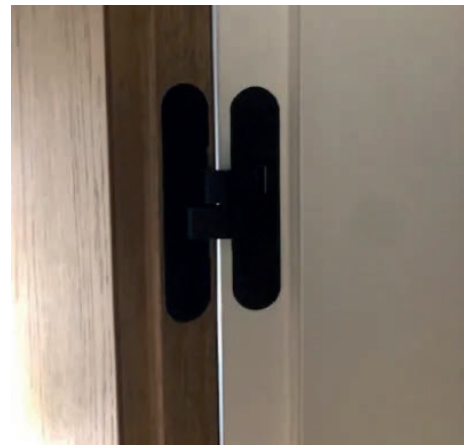
Colors (apply also to locks)



Silver



White



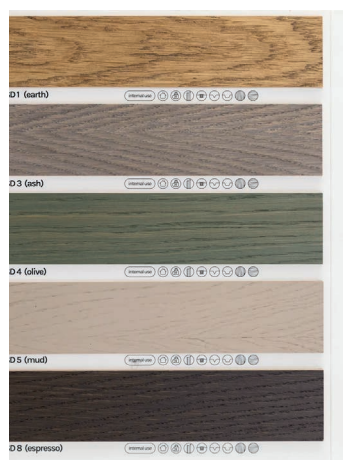
Black

Self-closing option



## FINISHES

### Real Wood Veneers and Lacquers



**Veneers**

Insensation uses white oak veneers and can create custom colors for large projects upon request.

- D1 (earth)
- D3 (ash)
- D4 (olive)
- D5 (mud)
- D8 (espresso)



**Veneers**

- SD9 (mocha)
- SD10 (camel)
- SD12 (champagne)
- SD14 (cedar)
- SD15 (pepper)



**Lacquers**

- SM2 (antique)
- SM3 (berkshire)
- SM4 (branch)
- SM5 (forest)
- SM7 (caviar)
- SM8 (pewter)

RAL 7001	RAL 7001	RAL 7002
RAL 7009	RAL 7010	RAL 7011
RAL 7022	RAL 7023	RAL 7024
RAL 7034	RAL 7035	RAL 7036
RAL 7043	RAL 7044	RAL 8000
RAL 8008	RAL 8011	RAL 8012
RAL 8022	RAL 8023	RAL 8024
RAL 9004	RAL 9005	RAL 9010

The wide range of door finishes from standard white matt lacquer (RAL 9016) to exclusive coloured lacquer matching the standards of italian cabinetry, allows you to meet any budget for any project.

Available in 259 colors in matt, super matt, textured or gloss

## DOOR LEVERS AND PULLS



Levers



Sliding door pulls



Pull handles



Alpha milled handle



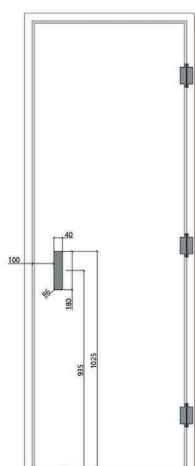
Alpha milled handle veneer



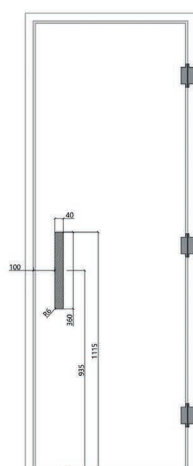
Vega milled handle



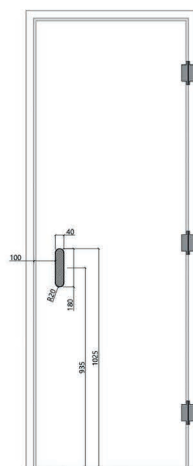
Square milled handle



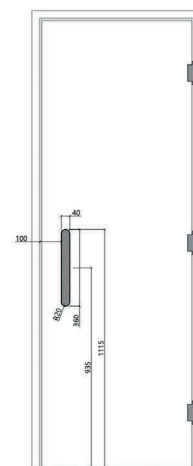
SQUARE 18cm Pull handle



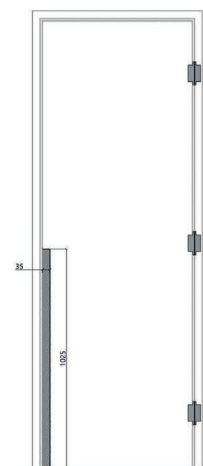
SQUARE 36cm Pull handle



VEGA 18cm Pull handle

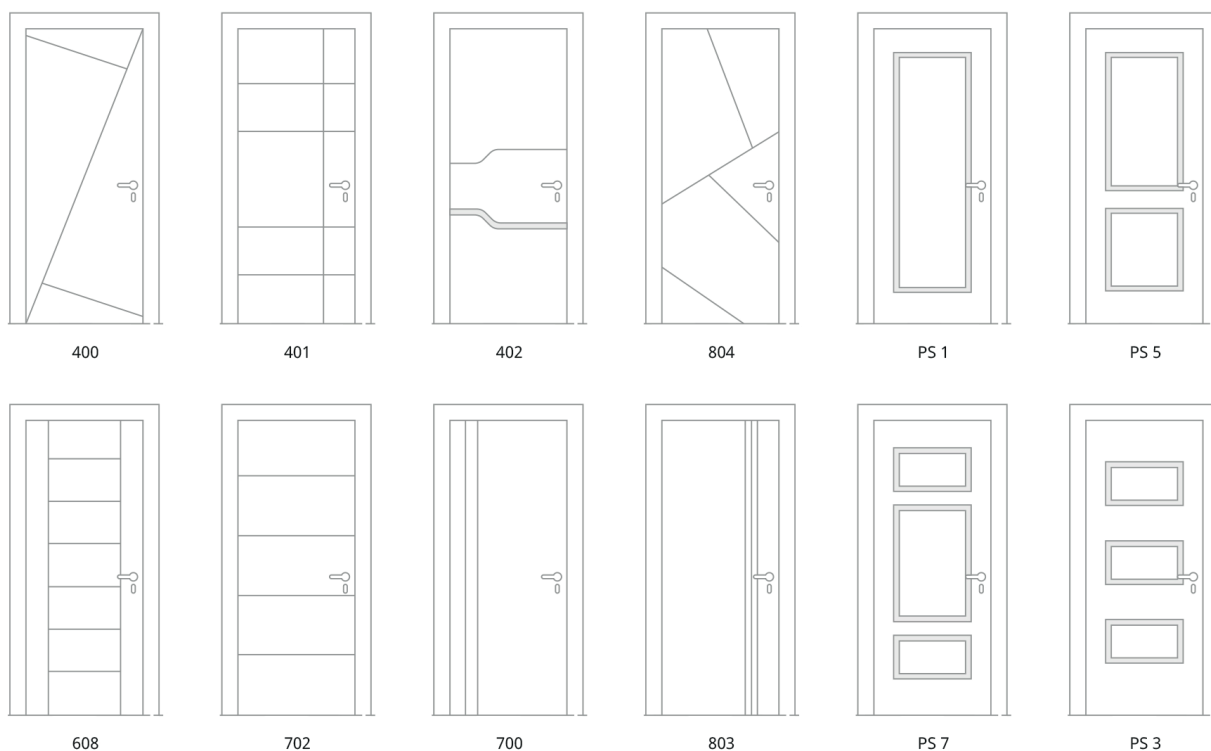


VEGA 36cm Pull handle

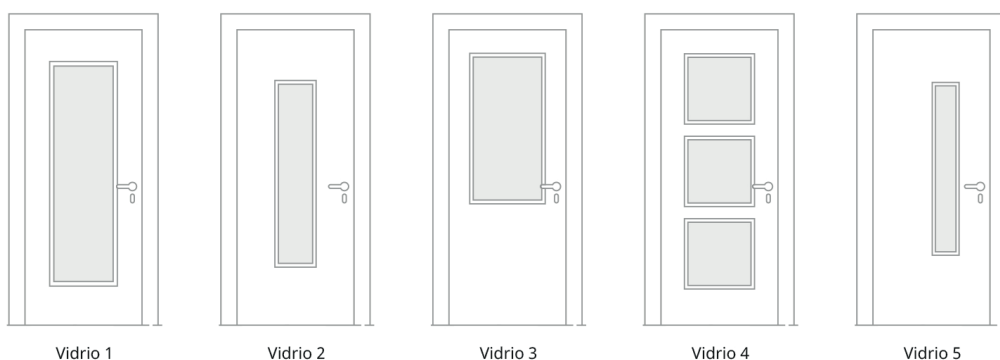


ALPHA Pull handle

## PANTOGRAPHIC DESIGN AND GLASS INSERTS



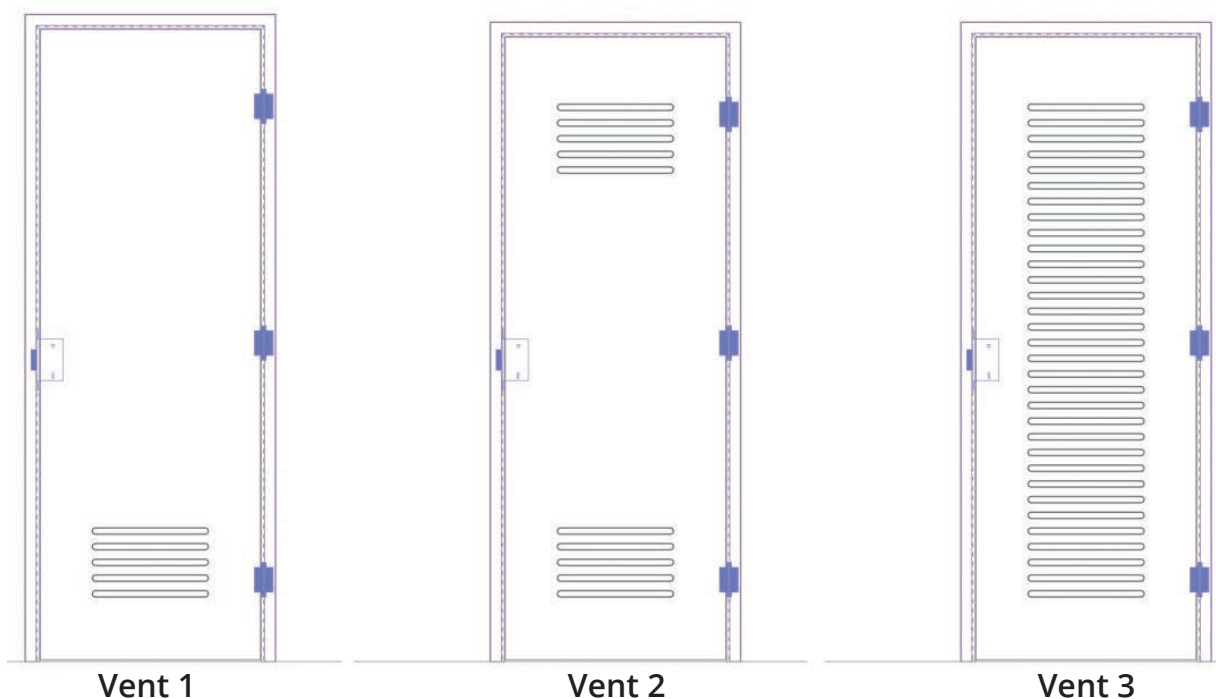
As the options for pantographic design are numerous, we can apply any design you choose, on demand, in incredible detail.



Although these glazed designs are the most popular, you can create your own design on demand, exactly as you want it.

## SPECIAL CONFIGURATIONS

### HVAC millings



### Drop down seal



#### QUIET-SEAL™ Drop down seal

Automatic door bottoms, commonly called draught excluders, are automatic devices that drop a seal down to the floor as the door closes. They are activated by a button pressed against the door jamb to perfectly seal the gap between the door and floor. Keeping draughts of air, smoke, dust and noise out of an environment contributes to greater comfort, guaranteeing savings in terms of the amount of energy required to heat or cool the same.

Insensation mills and installs the QUIET-SEAL™ in all of our swing doors on request, adding yet another unique component to our innovative door lines.