



## **PIVOT Installation Instructions**

Feb-24



## Frame Installation

- 1 Unwrap the door frame.
- 2 Remove two screws on each side and remove the shipping threshold. **Do not remove template.**



- 3 Take out the plastic caps.



- 4 Remove the wire from the frame (if your door comes with a Smart Lock).

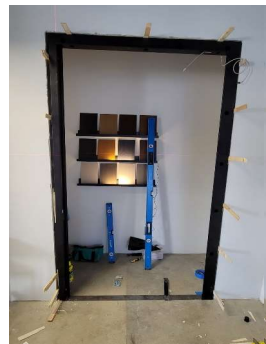


5 Insert the frame into the door opening.

6 Fix and level one (vertical) side of the frame.  
Use a laser or manual level to check that the heights of the frame are plumb. Fix the frame using screws suitable for your application (concrete/brick/wood/steel (not supplied)).



7 Check the level of the upper (horizontal) frame. If necessary, use shims for leveling.



8 Fix and level second (vertical) side of the frame.

9 Fix the upper (horizontal) frame.

10 Check the **level of all 3 sides** of the frame in **each of the 3 planes**. Additionally, check the length of the diagonals of the installed frame, They **must be equal**.  
If everything is OK, cut off the shims flush with the frame.

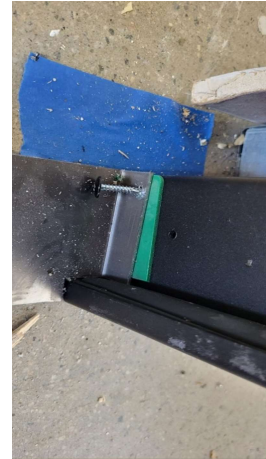
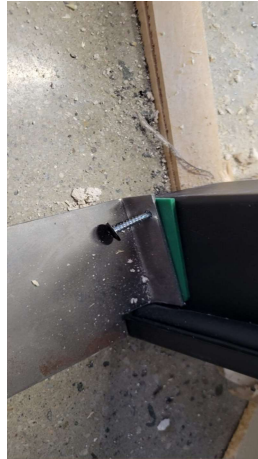
11 Fill up the gap between the frame and the opening with polyurethane foam.

## Template Use

- 12 Drill a hole in the floor using the template provided together with the frame. Use 1/4" drill bit (not provided).



- 13 Remove 1 screw on each side securing the installation template and remove the installation template and gaskets.



## Pin Reception Placement

- 14 Use suitable hole saw (concrete/stone/wood (not provided)) make a hole in the floor for the bottom guide pin. Diameter: Ø 32 mm (~1¼ inch); Depth: 37-40 mm (~1½ inch).

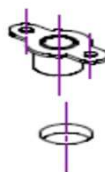


**The template offers guides for both right and left opening doors. Use only the desired guide accordingly.**

- 15 Insert the pin reception piece to the drilled hole using PU structural adhesive.

Fix with screws (provided) before the adhesive dries.

Allow the adhesive to dry before moving to the next step.



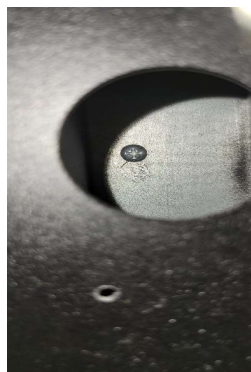
Use masking tape to prevent clogging of the pin guide.

### Casing Installation

- 16 Cut the casing (or plaster J-profile) to the desired length.

- 17 Fix the casing to the frame through the large holes on the back of the frame.

- 18 From the other side Install the plaster J-profile.



**The casing and J profile must be installed flush with the edge of the frame.**



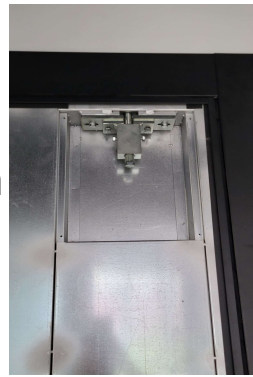
## Doorleaf Placement

- 19 Unwrap the door leaf.
- 20 On the edge of the door on the pivot side, remove the two screws that hold the battery compartment.
- 21 Take out the battery compartment, disconnect the wire and remove it.
- 22 Remove any remaining screws on the side panel and remove it.
- 23 Slide the front panel to the side to remove it.





- 24 Remove 4 screws of the covers of the pivot pin mechanism. One mechanism in the top and one mechanism in the bottom corner of the door.

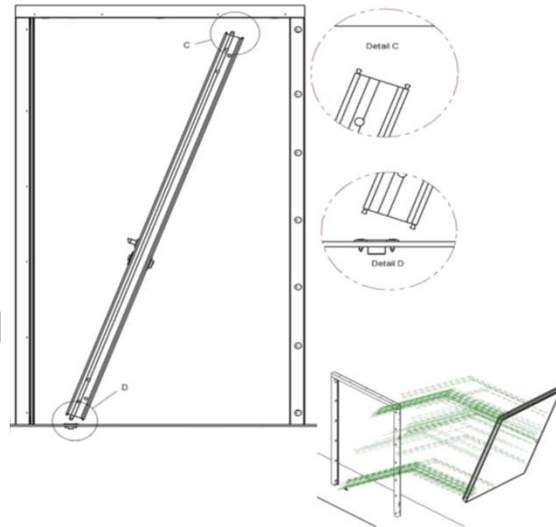


- 25 Using a 13mm socket, loosen the pin block retaining bolts at the top and bottom of the door.



- 26 In angled position and with the pivot pins tucked in, place the doorleaf close to pin reception piece.

- 27 Pick up the doorleaf to vertical position and take out the top pin so that it is inserted to the top pin reception on the frame. Adjust the pin of the top hinge so that it is out of the doorleaf for  $\sim 1\frac{1}{2}$  -  $\frac{3}{4}$  inch.



- 28 Take out the bottom pin so that it is inserted to the reception on the floor guide. Adjust the pin of the bottom hinge so that it is out of the doorleaf for  $\sim 1\frac{1}{2}$  inch.
- 29 Adjust the pivot pin to the correct height , using lifting tools to assist the movement, such us air lifters. While adjusting the height of the doorleaf, always use lifting tools to assist the hinge movement.
- 30 From the top of pivot pin side, find the wire and connect it to the appropriate connector. Fix the connector with a screw.

### Final Adjustment

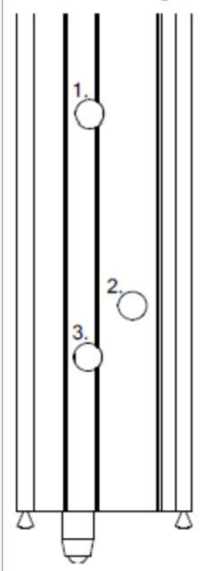
While adjusting the height of the doorleaf, always use lifting tools to assist the hinge movement

- 31 Close the door and check the perimeter of the doorleaf frame rebate. Adjust the hinges accordingly if needed.

### PIVOT HINGE USER MANUAL

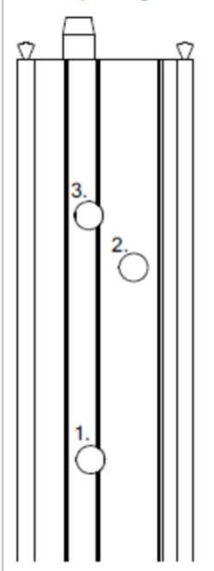
Doorleaf Side View

**Bottom Hinge**




Doorleaf Side View


**Top Hinge**




*Instructions below are applied to both hinges*


**Screws nr1 – Pin Adjustment**

 Clockwise  
Pin Extrusion


 Counter-clockwise  
Pin Intrusion


**Screws nr2 Doorleaf Displacement**


 Clockwise  
Displacement towards the lock

 Counter-clockwise  
Displacement away from the lock

**Screws nr3 Pin Block**

 Clockwise  
Pin block

 Counter-clockwise  
Pin Unblock

 **Screws nr3 must always be unblocked (loose) when adjusting the hinge, and blocked as a final step of installation!**



- 32 Check the door operation. The door should rotate easily. Sometimes the top pin becomes too deep in frame and the door has difficulty turning. In this case, unscrew the top pin one turn.
- 33 Check if the lock is normal operated.
- 34 Check if the gap is equal on all 3 sides between the door leaf and the moldings.

### **Completion of Installation**

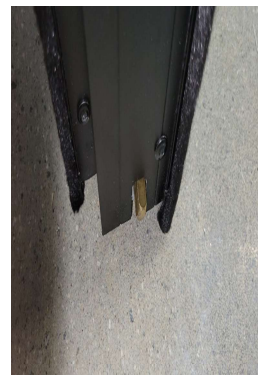
- 35 Install the covers of the pivot pin mechanism.
- 36 Install the front door panel.
- 37 Install the door edge profile.
- 38 Connect the battery connector and install battery compartment, secure it.
- 39 Install the strike plate.



- 40 Install the upper and lower drop seal push plates.



- 41 Rotate the square pin to adjust the drop seal. Adjust both the drop-down seals at the top and the bottom.



- 42 Install plastic caps.



- 43 Clean the door surface with warm soapy water.



- 44 If your door is equipped with a Smart biometric lock, program the lock according to the instructions on our website.

Your door is ready!