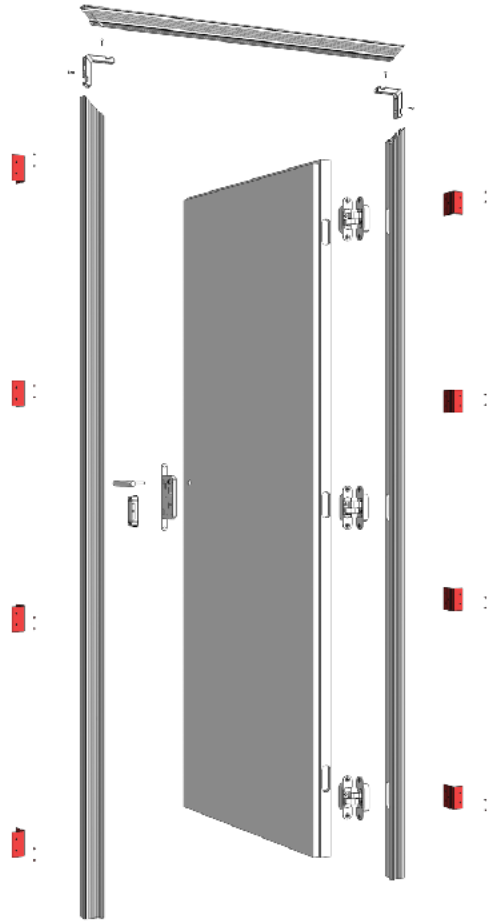




## INSTALLATION

FS1 Frameless Swing

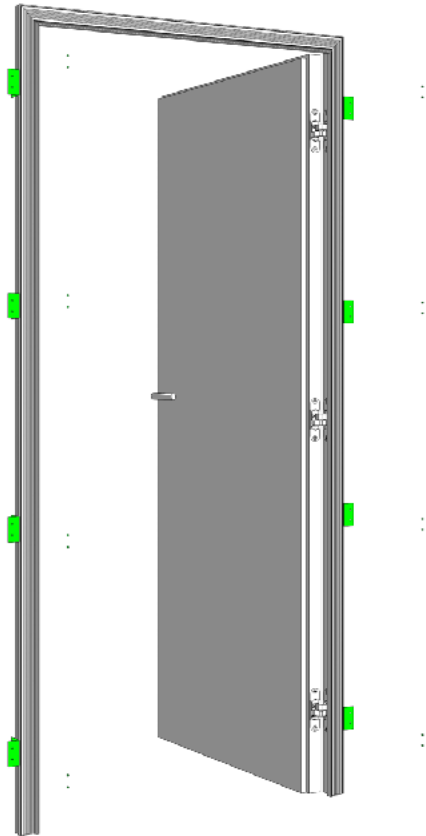


Insensation's FS1 Frameless Swing door is the easiest frameless door to install. All the components except the outer L-brackets are pre-milled and pre-installed in our manufacturing facility. This will save you hours and days of work.

**Please read all of the 3 following steps before starting the installation.**

## STEP 1

Attach the L-brackets as shown.



## STEP 2

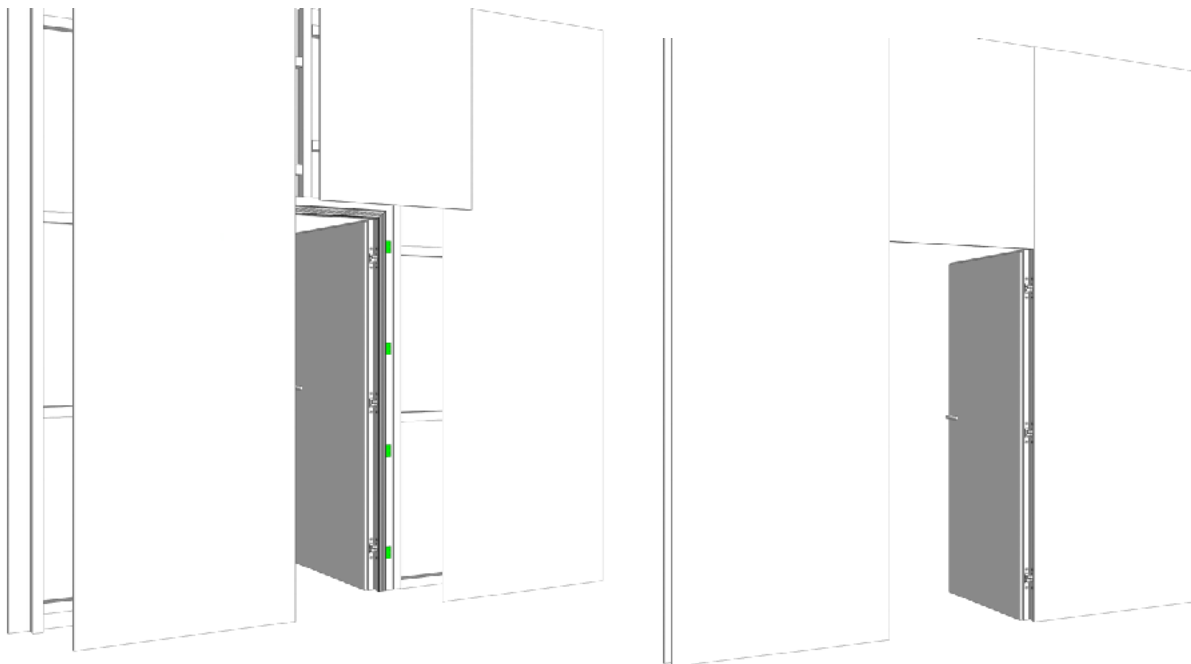
Fix the L-brackets to the underlying wall structure. The wall can be any kind of wall. Refer to the CAD drawings from your architect for determining single or double drywall, or even solid brick, block or solid plaster walls.

Depending on the raw openings which were prepared, you may have to provide blocking or shifting to eliminate the gap between the opening and the L-brackets.

Using leveling lasers will assist you in making sure the horizontal and vertical axis of the door frame are perfectly square.

After the frames are attached securely to the underlying wall structure, most contractors fill the gap between the door frame and wall with good quality construction foam.

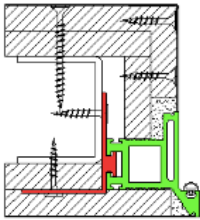
Remember that the installation of the drywall on top of the door frames is going to provide an additional layer of solidity to the entire construction.



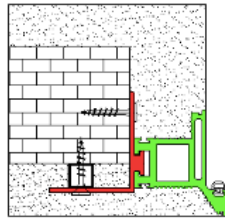
### STEP 3

Install the drywall over the frame. The installation of the drywall is accomplished using standard drywall practices that are used in the trade. You will need one edge bead for the return side of the wall. The frameless door frame will act as the edge bead on the flush side of the wall.

#### OPENING INSIDE

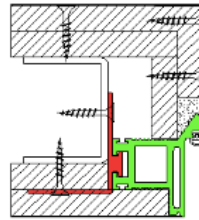


*Plasterboard wall*  
**1/2" or 5/8"**  
single or double plated

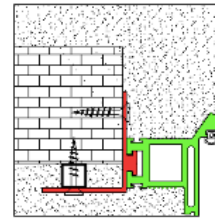


*Brick wall*

#### OPENING OUTSIDE



*Plasterboard wall*  
**1/2" or 5/8"**  
single or double plated



*Brick wall*





<b>PRODUCTS by www.usg.com</b>	<b>Frame HINGE side (cut out openings in drywall)</b>	<b>Frame LOCK side</b>
Sheetrock First Coat Primer	Apply with brush on the ribbed aluminum and let it dry. (Only if there are openings between drywall and frame)	
DuraBond	Apply first layer on aluminum. Create the mix according to the instructions on the packaging.	Apply first layer on aluminum. Create the mix according to the instructions on the packaging.
Beadex Drywall Joint Tape Thickness 2 inch	Push the tape in the DuraBond. Make everything air-free with the spatula. Put the rest of the DuraBond on the tape.	Push the tape in the DuraBond. Make everything air-free with the spatula. Put the rest of the DuraBond on the tape.
DuraBond	Second layer is not necessary.	Second layer is not necessary.
Plus3 Light Weight All Purpose Pre-Mixed Joint Compound	1 layer Plus3, apply 24h after DuraBond. DuraBond has to be completely dry.	1 layer Plus3, apply 24h after DuraBond. DuraBond has to be completely dry.

Finish with plaster according to the instructions above. Your professional drywaller may have his own specific methods that will work just as well.