

SHANGHAI



Shanghai modern dining table base is made of 4 legs which consist of 3 lateral metal faces + 1 fixed wooden face. The top and base are available in various colors and finishes. Fixed or extended version. The innovative extension mechanism keeps alterations to the table's overall shape to a minimum by allowing an extension leaf to be mounted on a pull-out steel slide on either end. Height 76 cm including top.

TOP



Veneered Oak, Vintage Oak and American Walnut on Wood Particles E1 th. 40mm. Veneered border.



Veneered Oak, Vintage Oak and American Walnut on MDF E1 th. 40mm. Veneered border 10mm. Then shaped bevelled at 25°.



Veneered Oak, Vintage Oak and American Walnut on MDF E1 th. 40mm. Veneered border 10mm. Then shaped bevelled at 25°. Rounded corners.



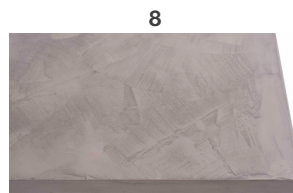
Solid wood border on Wood Particles E1 th. 40mm. Veneered Oak, Vintage Oak. Natural edges. (Only available on 180x90, 200x100, 220x100)



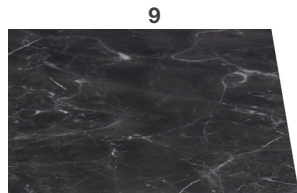
Veneered Oak, Vintage Oak and American Walnut + spatula on MDF E1 th. 40mm. Veneered + spatula border.



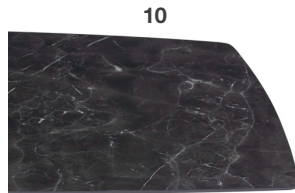
Spatula + Veneered Oak, Vintage Oak and American Walnut on MDF E1 th. 40mm. Spatula + veneered border.



Spatula on MDF E1 th. 40mm. Spatula border.



Ceramic marble th. 6mm reinforced by MDF E1 th. 40mm shaped bevelled at 25°.



Ceramic marble th. 6mm reinforced by MDF E1 th. 40mm shaped bevelled at 25°. Curved 4 edges.



Veneered Oak, Vintage Oak and American Walnut on MDF E1 th. 40mm. Veneered border 10mm. Then shaped bevelled at 25°. Curved 4 edges.

TOP FINISHES



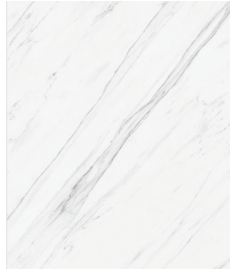
Oak



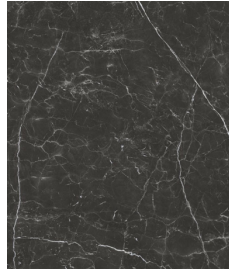
Vintage Oak



American Walnut



Ceramic Marble
Calacatta



Ceramic Marble
Nero Marquina

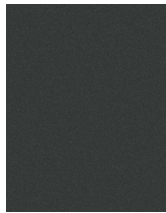


Spatula light grey



Spatula dark grey

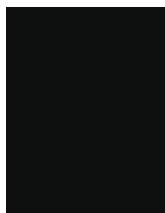
METAL BASE COLORS



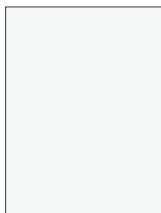
Noir 2100



7016



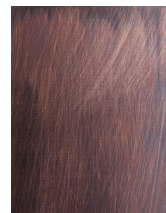
9005



9016



Bronze

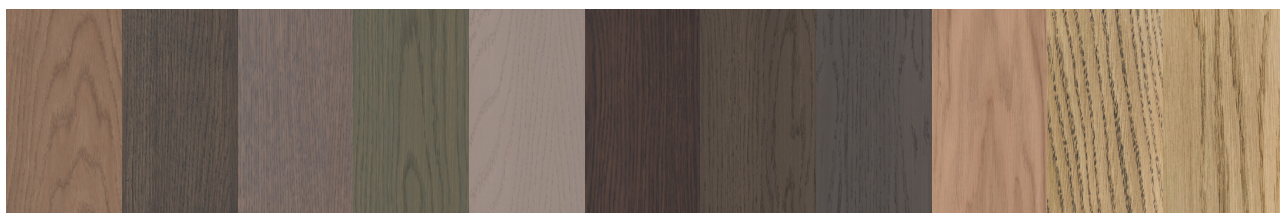


Copper



Metal bases are also available in most
RAL colors with extra charge

OAK COLORS



TB1

TB2

TB3

TB4

TB5

TB6

TB8

TB9

TB10

TB11

TB12