

SHANGHAI



Shanghai modern coffee table base is made of 4 legs which consist of 3 lateral metal faces + 1 fixed wooden face. The top and base are available in various colors and finishes.

Height including top:

Veneered version 1 38.5cm

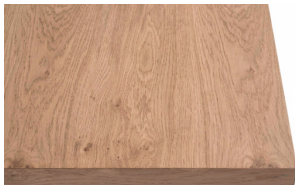
Veneered version 3 36.2cm

Solid wood + veneered version 5 38.5cm

Ceramic marble 36.8cm

TOP

1



Veneered Oak, Vintage Oak and American Walnut on Wood Particles E1 th. 40mm. Veneered border.

3



Veneered Oak, Vintage Oak and American Walnut on MDF E1 th. 17mm. Shaped bevelled at 25°. Curved 4 edges.

5



Solid wood border on Wood Particles E1 th. 40mm. Veneered Oak, Vintage Oak. Natural edges. (Only available on 130x80)

6



Ceramic marble th. 6mm reinforced by MDF E1 th. 17mm shaped bevelled at 25°.

7



Ceramic marble th. 6mm reinforced by MDF E1 th. 17mm shaped bevelled at 25°. Curved 4 edges.

TOP FINISHES



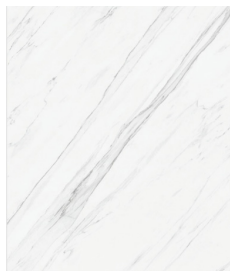
Oak



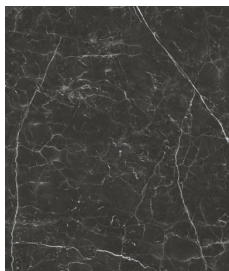
Vintage Oak



American Walnut



Ceramic Marble
Calacatta



Ceramic Marble
Nero Marquina

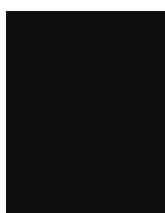
METAL BASE COLORS



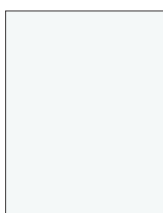
Noir 2100



7016



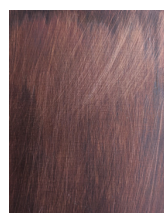
9005



9016



Bronze

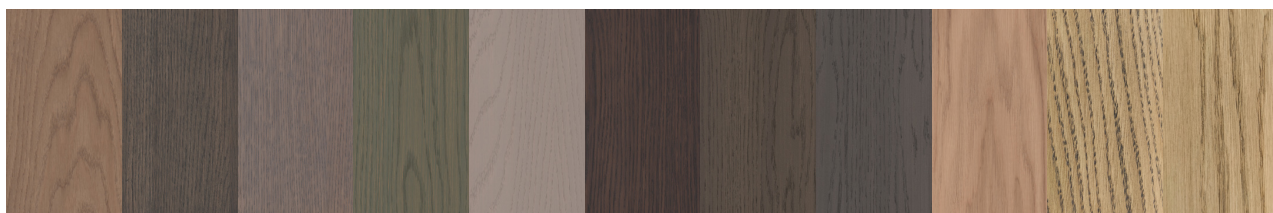


Copper



Metal bases are also available in most
RAL colors with extra charge

OAK COLORS



TB1

TB2

TB3

TB4

TB5

TB6

TB8

TB9

TB10

TB11

TB12