

CANNES



Cannes modern coffee table base is made of solid metal th. 8mm. The top and base are available in various colors and finishes. Top is always shaped bevelled at 25° emphasizing the upper base detail.

Height including top:

Ø 98cm height 39cm

Ø 78cm height 39cm

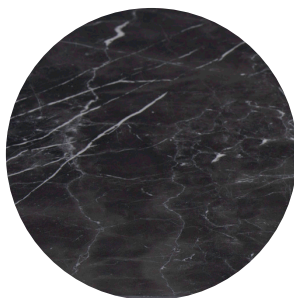
Ø 58cm height 45cm

Ø 38cm height 51cm

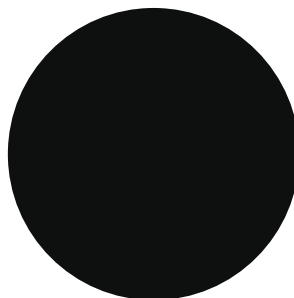
TOP



Veneered Oak, Vintage Oak and American Walnut on MDF E1 th. 17mm.



Ceramic marble th. 6mm reinforced by MDF E1 th. 17mm shaped bevelled at 25°.



Lacquered MDF E1 th. 17mm.

TOP FINISHES



Oak

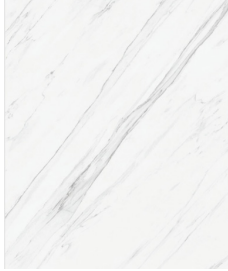


Vintage Oak

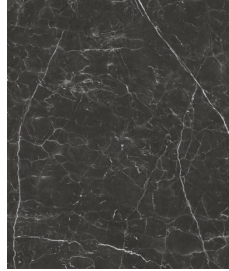


American Walnut

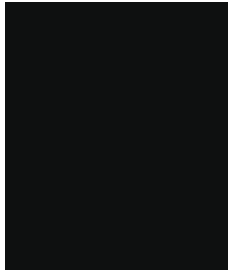
TOP FINISHES



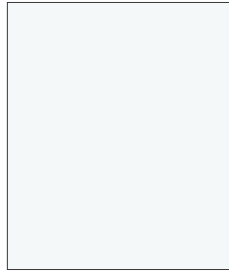
Ceramic Marble
Calacatta



Ceramic Marble
Nero Marquina



Lacquered
Ral 9005



Lacquered
Ral 9016



Lacquered tops are also available in
all RAL colors with extra charge

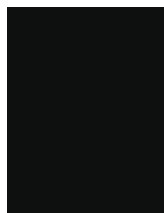
METAL BASE COLORS



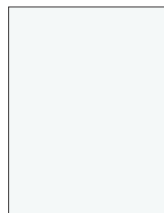
Noir 2100



7016



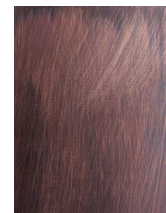
9005



9016



Bronze

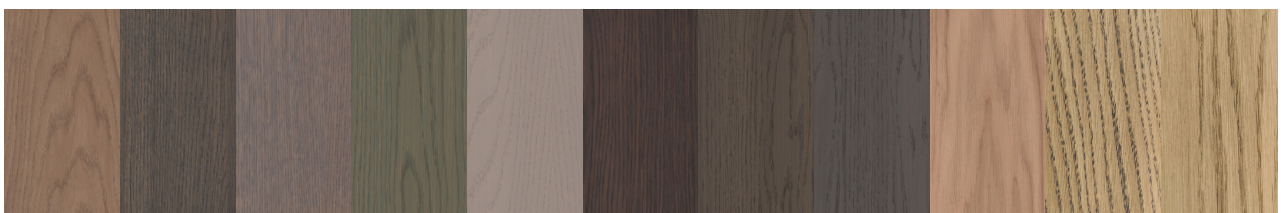


Copper



Metal bases are also available in most
RAL colors with extra charge

OAK COLORS



TB1

TB2

TB3

TB4

TB5

TB6

TB8

TB9

TB10

TB11

TB12