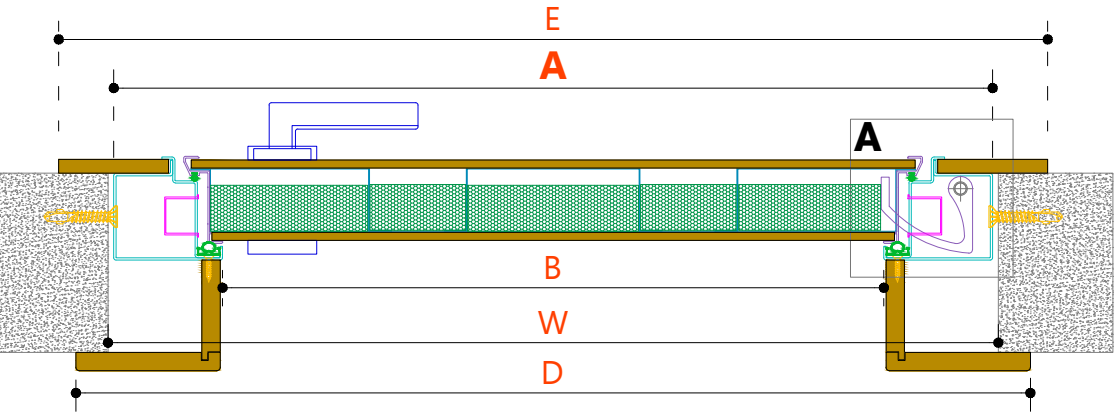


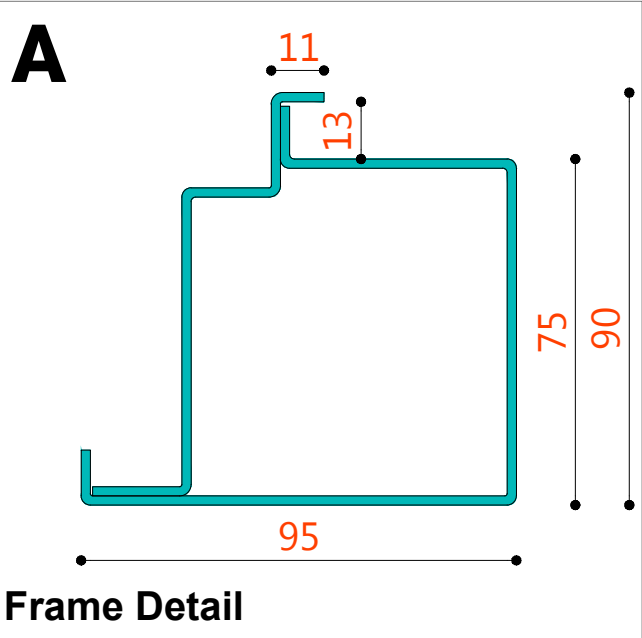
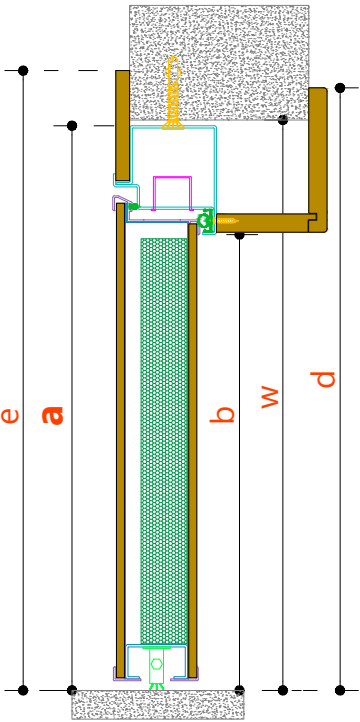
CO-PLANAR DOOR SPECS



Dimensions											
Width						Height					
W		A	B	D	E	w		a	b	d	e
From	To	Outside Frame Dimension	Clear passage	Exterior Architraves	Interior Architraves	From	To	Outside Frame Dimension	Clear passage	Exterior Architraves	Interior Architraves
990	999	1000	810	1066	1096	2140	2149	2150	2055	2183	2198
-10	-1	0	-190	66	96	-10	-1	0	-95	33	48

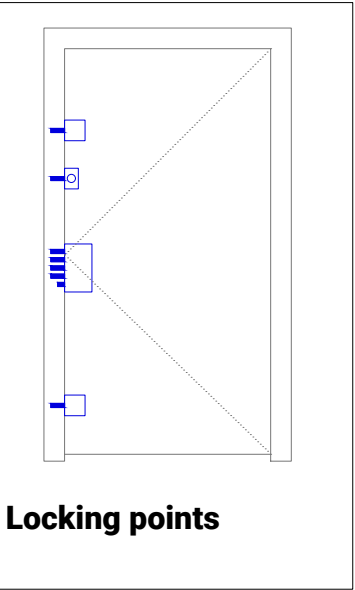
Dimensions per 1cm up to A=1250 x a=3000

All orders are executed using dimensions A & a, wall thickness, and way of opening looking from the push side



Specs

- Typology**
Single-leaf / Double-leaf / Fixings
- Doorleaf**
Armoured door with concealed hinges. Galvanized steel core, reinforced with 3 beams, insulated with rockwool. Panels 6-8mm in each side. Panels are mounted using an aluminium restraint profile.
- Frame**
Steel tubular frame in black powder-coat (other colours available on request), decorated with architraves in the same colour with the panels. Internal architraves are coplanar with the doorleaf.
- Dimensions**
Dimensions made to measure up to 125cm x 300cm (A size).
- Locking System**
Locking system with 6 points and opening limiter - latch. Gear lock, european cylinder with 1 + 5 keys
- Hinges**
Two heavy duty concealed hinges, adjustable in 3 dimensions.
- Handles**
Lever, limiter latch, outside ball handle, eye-viewer in argent or bronze colour
- Insulation**
Dropdown seal on the bottom, double insulation gaskets on the leaf and frame part



Security with
minimal aesthetics.